

GARVER CONSULTANTS, INC. 4701 Northshore Drive, North Little Rock, AR 72118
 JOB NO. 061562 DATE: NOVEMBER 2018



4701 Northshore Drive
 North Little Rock, AR 72118
 (501) 376-3633

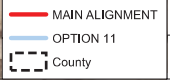


PULASKI, GARLAND, AND SALINE COUNTIES
 SALINE COUNTY, ARKANSAS
 SOUTHWEST TRAIL SYSTEM

JOB NO. 061562
 DATE: NOVEMBER 2018

PRELIMINARY
 ALIGNMENTS

- MAIN ALIGNMENT
- OPTION 11
- Points of Interest
- County



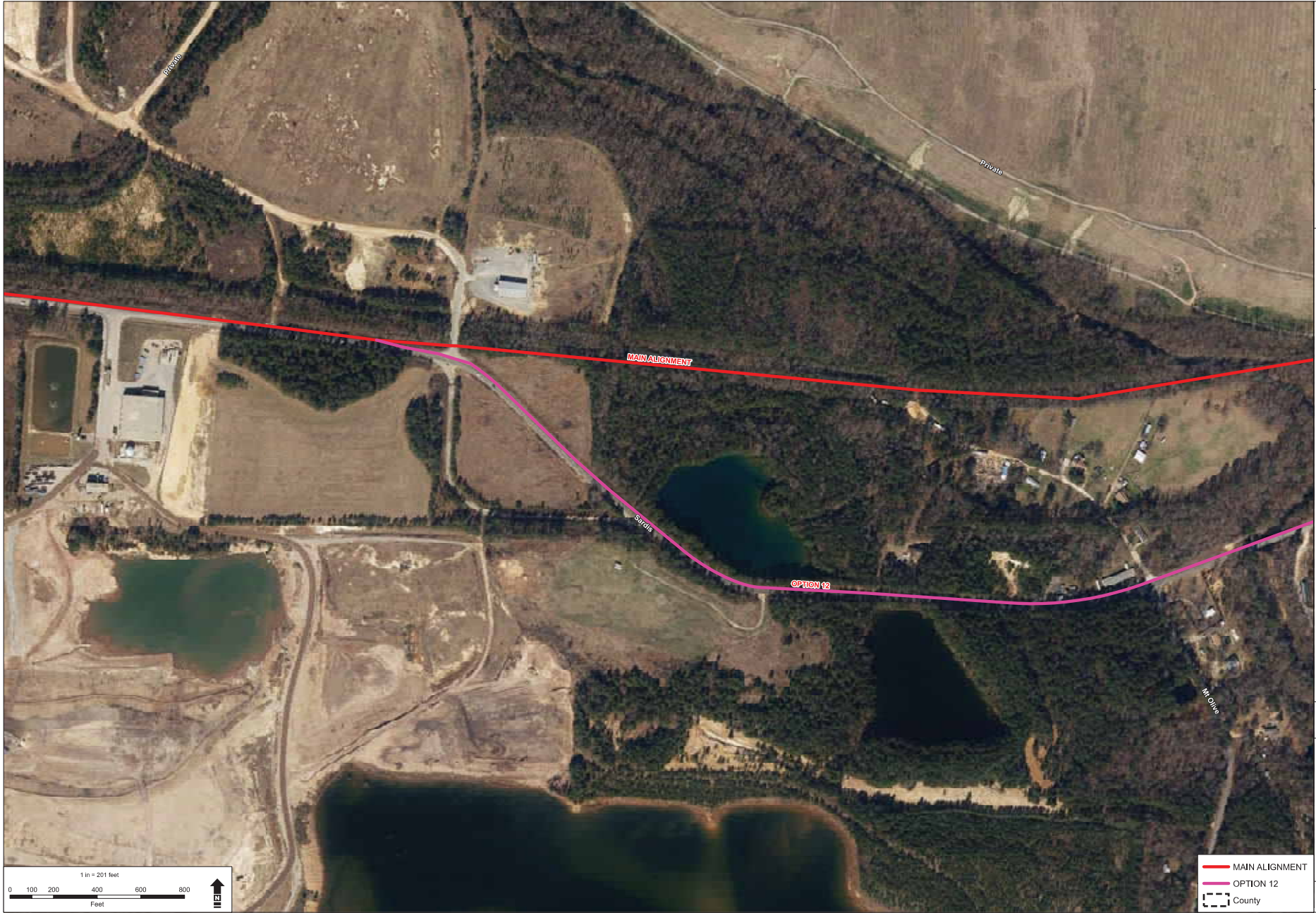
4701 Northshore Drive
 North Little Rock, AR 72118
 (501) 376-3633



PULASKI, GARLAND, AND SALINE COUNTIES
 SALINE COUNTY, ARKANSAS
 SOUTHWEST TRAIL SYSTEM

JOB NO.: 061562
 DATE: NOVEMBER 2018

PRELIMINARY
 ALIGNMENTS



4701 Northshore Drive
 North Little Rock, AR 72118
 (501) 376-3633



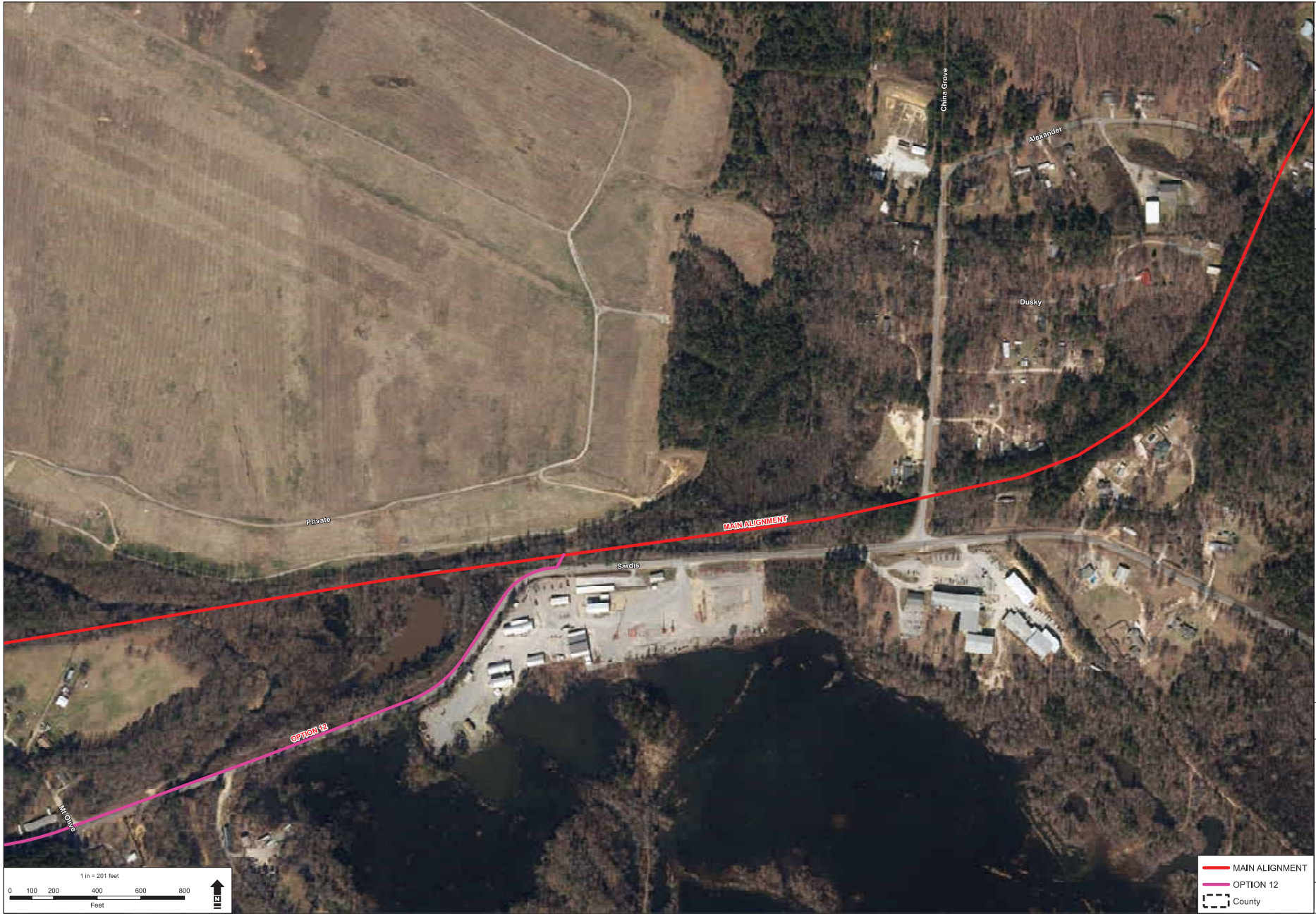
PULASKI, GARLAND, AND SALINE COUNTIES
 SALINE COUNTY, ARKANSAS
 SOUTHWEST TRAIL SYSTEM

JOB NO.: 061562
 DATE: NOVEMBER 2018

PRELIMINARY
 ALIGNMENTS

- MAIN ALIGNMENT
- OPTION 12
- County

GARVER HAS CONDUCTED VISUAL INSPECTIONS OF THE PROJECT AREA AND HAS NOT CONDUCTED A FIELD SURVEY OF THE PROJECT AREA. THE INFORMATION SHOWN ON THIS MAP IS BASED ON THE INFORMATION PROVIDED BY THE CLIENT AND IS NOT GUARANTEED.



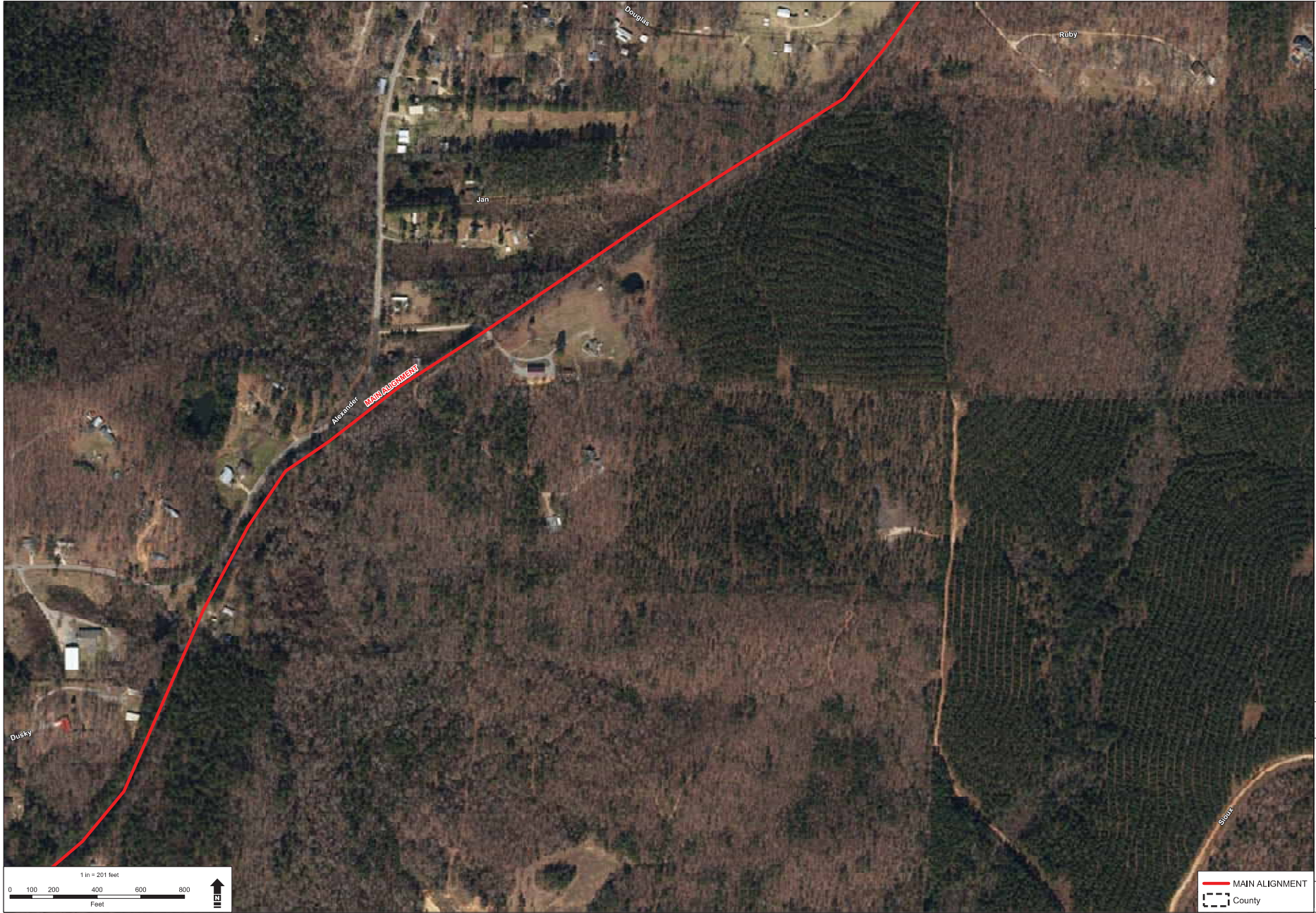
4701 Northshore Drive
 North Little Rock, AR 72118
 (501) 376-3633



PULASKI, GARLAND, AND SALINE COUNTIES
 SALINE COUNTY, ARKANSAS
 SOUTHWEST TRAIL SYSTEM

JOB NO.: 061562
 DATE: NOVEMBER 2018

PRELIMINARY
 ALIGNMENTS



GARVER CONSULTANTS, INC. 4701 Northshore Drive, North Little Rock, AR 72118
 PULASKI, GARLAND, AND SALINE COUNTIES, ARKANSAS
 SOUTH WEST TRAIL SYSTEM
 PRELIMINARY ALIGNMENTS
 NOVEMBER 2018



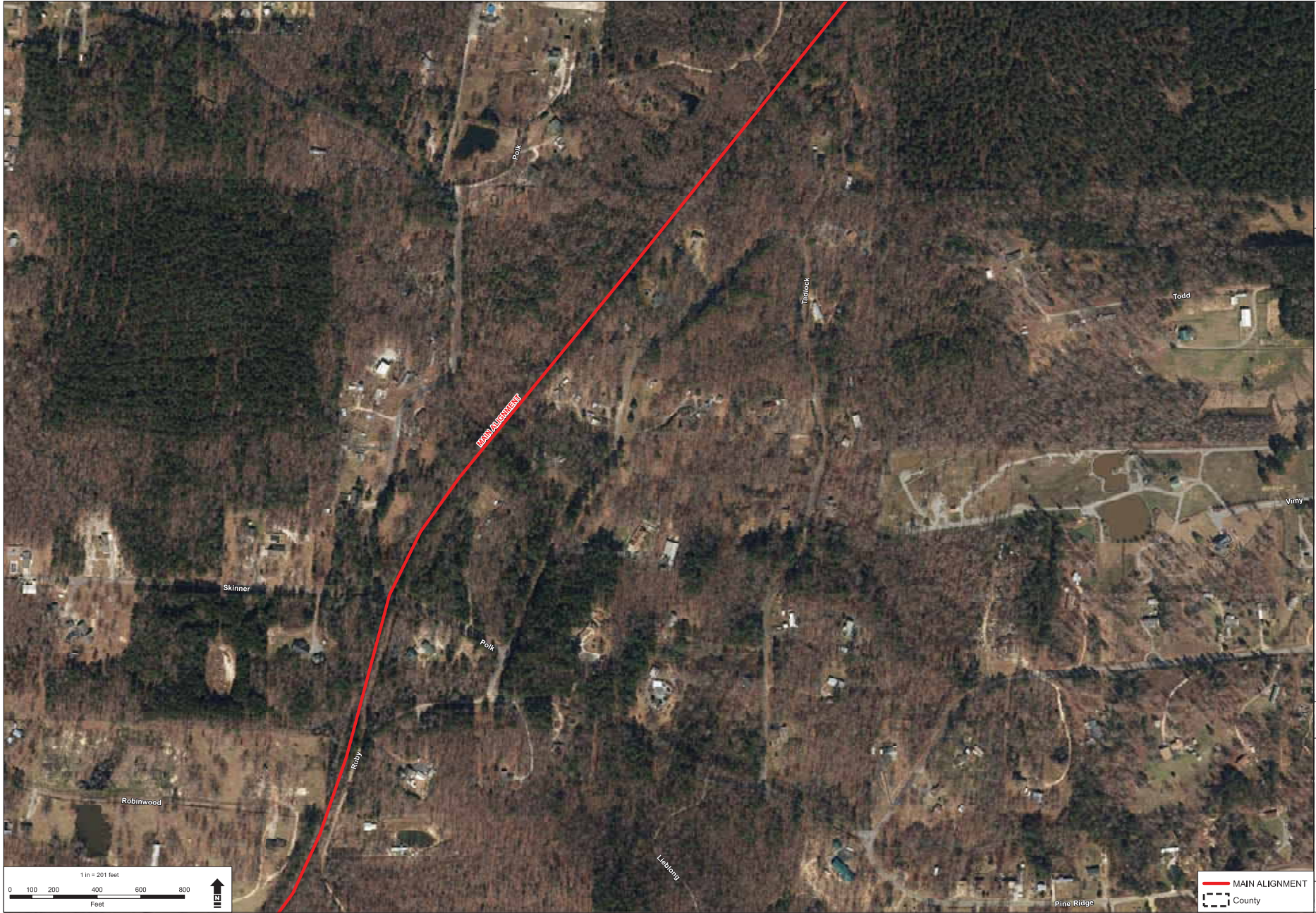
4701 Northshore Drive
 North Little Rock, AR 72118
 (501) 376-3633



PULASKI, GARLAND, AND SALINE COUNTIES
 SALINE COUNTY, ARKANSAS
 SOUTHWEST TRAIL SYSTEM

JOB NO.: 061562
 DATE: NOVEMBER 2018

PRELIMINARY
 ALIGNMENTS



4701 Northshore Drive
 North Little Rock, AR 72118
 (501) 376-3633



PULASKI, GARLAND, AND SALINE COUNTIES
 SALINE COUNTY, ARKANSAS
 SOUTHWEST TRAIL SYSTEM

JOB NO.: 061562
 DATE: NOVEMBER 2018

PRELIMINARY
 ALIGNMENTS



4701 Northshore Drive
 North Little Rock, AR 72118
 (501) 376-3633



PULASKI, GARLAND, AND SALINE COUNTIES
 SALINE COUNTY, ARKANSAS
 SOUTHWEST TRAIL SYSTEM

JOB NO.: 061562
 DATE: NOVEMBER 2018

PRELIMINARY
 ALIGNMENTS



4701 Northshore Drive
 North Little Rock, AR 72118
 (501) 376-3633



PULASKI, GARLAND, AND SALINE COUNTIES
 SALINE COUNTY, ARKANSAS
 SOUTHWEST TRAIL SYSTEM

JOB NO.: 061562
 DATE: NOVEMBER 2018

PRELIMINARY
 ALIGNMENTS



4701 Northshore Drive
 North Little Rock, AR 72118
 (501) 376-3633



**PULASKI, GARLAND, AND SALINE COUNTIES
 SALINE COUNTY, ARKANSAS
 SOUTHWEST TRAIL SYSTEM**

JOB NO.: 061562
 DATE: NOVEMBER 2018

**PRELIMINARY
 ALIGNMENTS**

MAIN ALIGNMENT
 County



4701 Northshore Drive
North Little Rock, AR 72118
(501) 376-3633

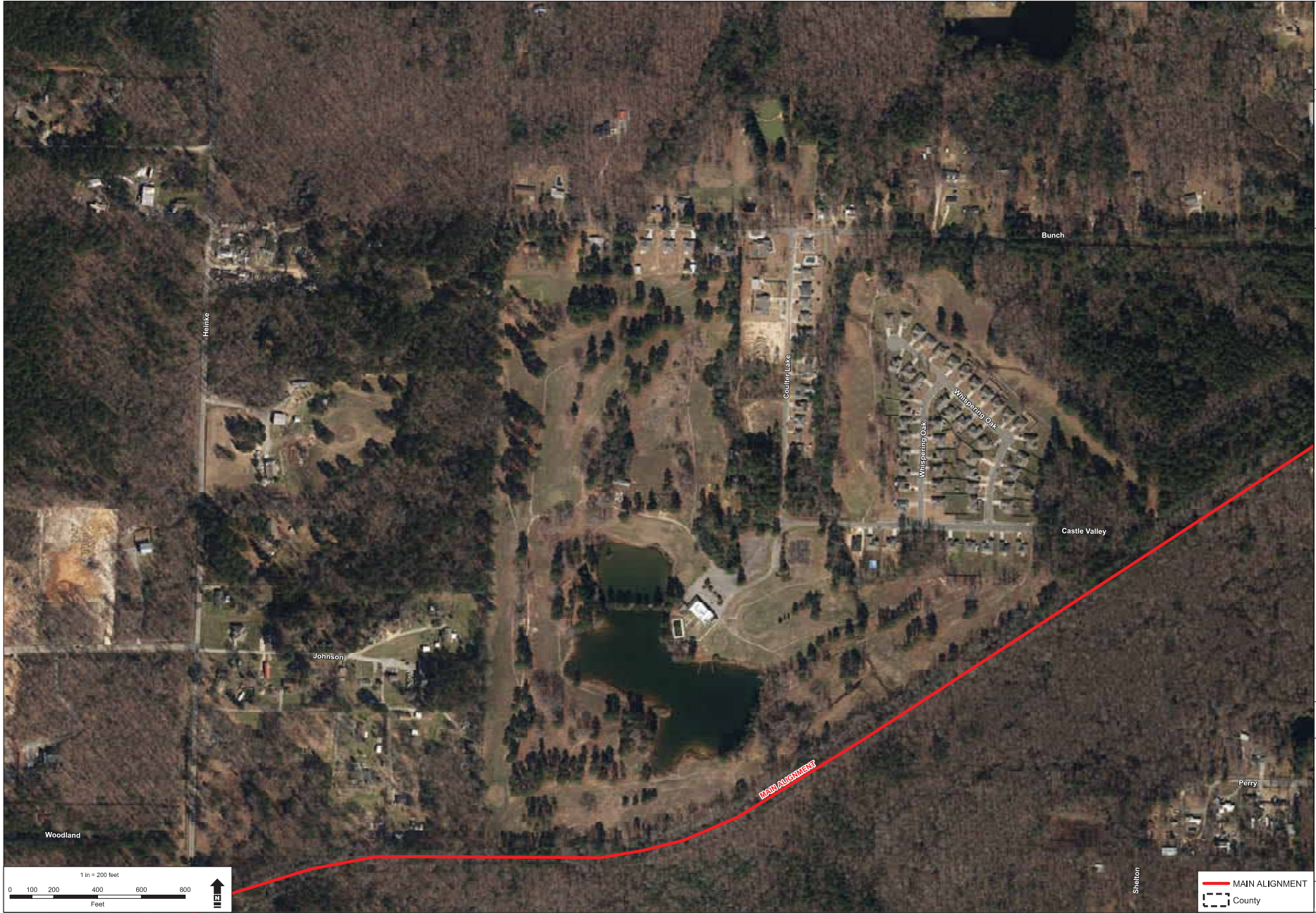


PULASKI, GARLAND, AND SALINE COUNTIES
PULASKI AND SALINE COUNTIES, ARKANSAS
SOUTHWEST TRAIL SYSTEM

JOB NO: 061562
DATE: NOVEMBER 2018

PRELIMINARY
ALIGNMENTS

MAIN ALIGNMENT
 County



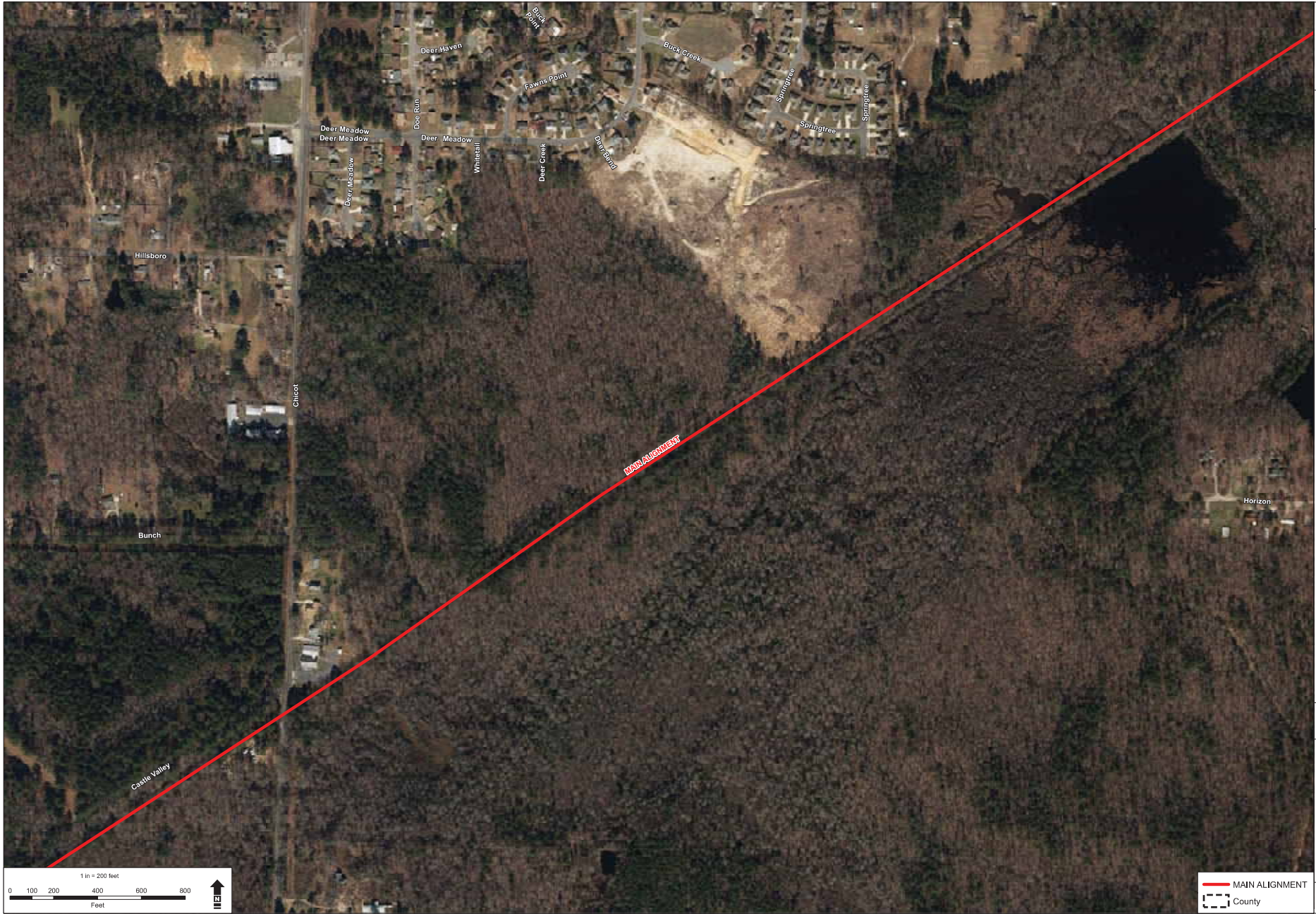
4701 Northshore Drive
 North Little Rock, AR 72118
 (501) 376-3633



PULASKI, GARLAND, AND SALINE COUNTIES
 PULASKI COUNTY, ARKANSAS
 SOUTHWEST TRAIL SYSTEM

JOB NO.: 061562
 DATE: NOVEMBER 2018

PRELIMINARY
 ALIGNMENTS



4701 Northshore Drive
 North Little Rock, AR 72118
 (501) 376-3633



PULASKI, GARLAND, AND SALINE COUNTIES
 PULASKI COUNTY, ARKANSAS
 SOUTHWEST TRAIL SYSTEM

JOB NO.: 061562
 DATE: NOVEMBER 2018

PRELIMINARY
 ALIGNMENTS

MAIN ALIGNMENT
 County



4701 Northshore Drive
 North Little Rock, AR 72118
 (501) 376-3633



PULASKI, GARLAND, AND SALINE COUNTIES
 PULASKI COUNTY, ARKANSAS
 SOUTHWEST TRAIL SYSTEM

JOB NO.: 061562
 DATE: NOVEMBER 2018

PRELIMINARY
 ALIGNMENTS



4701 Northshore Drive
 North Little Rock, AR 72118
 (501) 376-3633

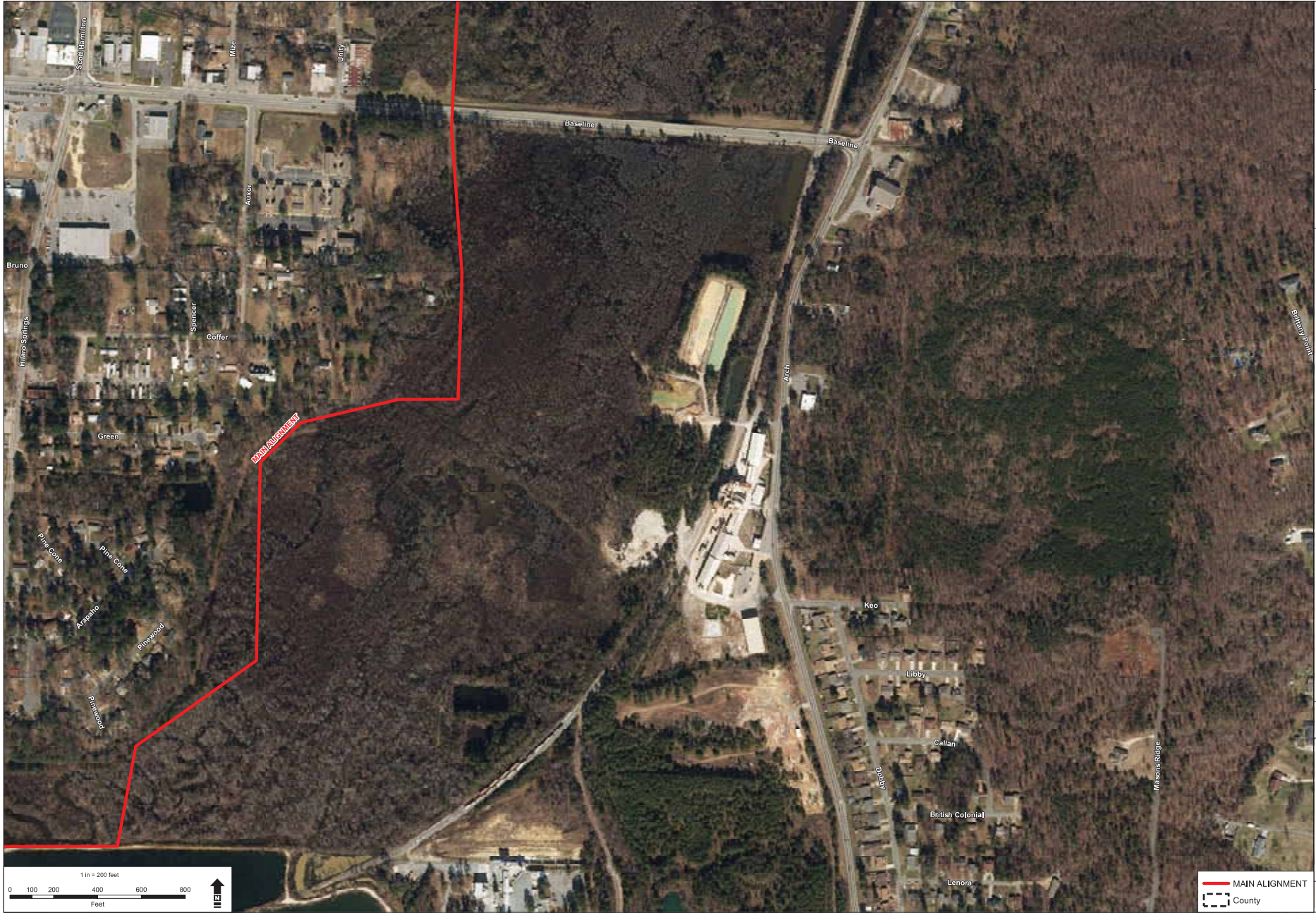


PULASKI, GARLAND, AND SALINE COUNTIES
 PULASKI COUNTY, ARKANSAS
 SOUTHWEST TRAIL SYSTEM

JOB NO.: 061562
 DATE: NOVEMBER 2018

PRELIMINARY
 ALIGNMENTS

 MAIN ALIGNMENT
 County



4701 Northshore Drive
 North Little Rock, AR 72118
 (501) 376-3633



PULASKI, GARLAND, AND SALINE COUNTIES
 PULASKI COUNTY, ARKANSAS
 SOUTHWEST TRAIL SYSTEM

JOB NO.: 061562
 DATE: NOVEMBER 2018

PRELIMINARY
 ALIGNMENTS



4701 Northshore Drive
 North Little Rock, AR 72118
 (501) 376-3633

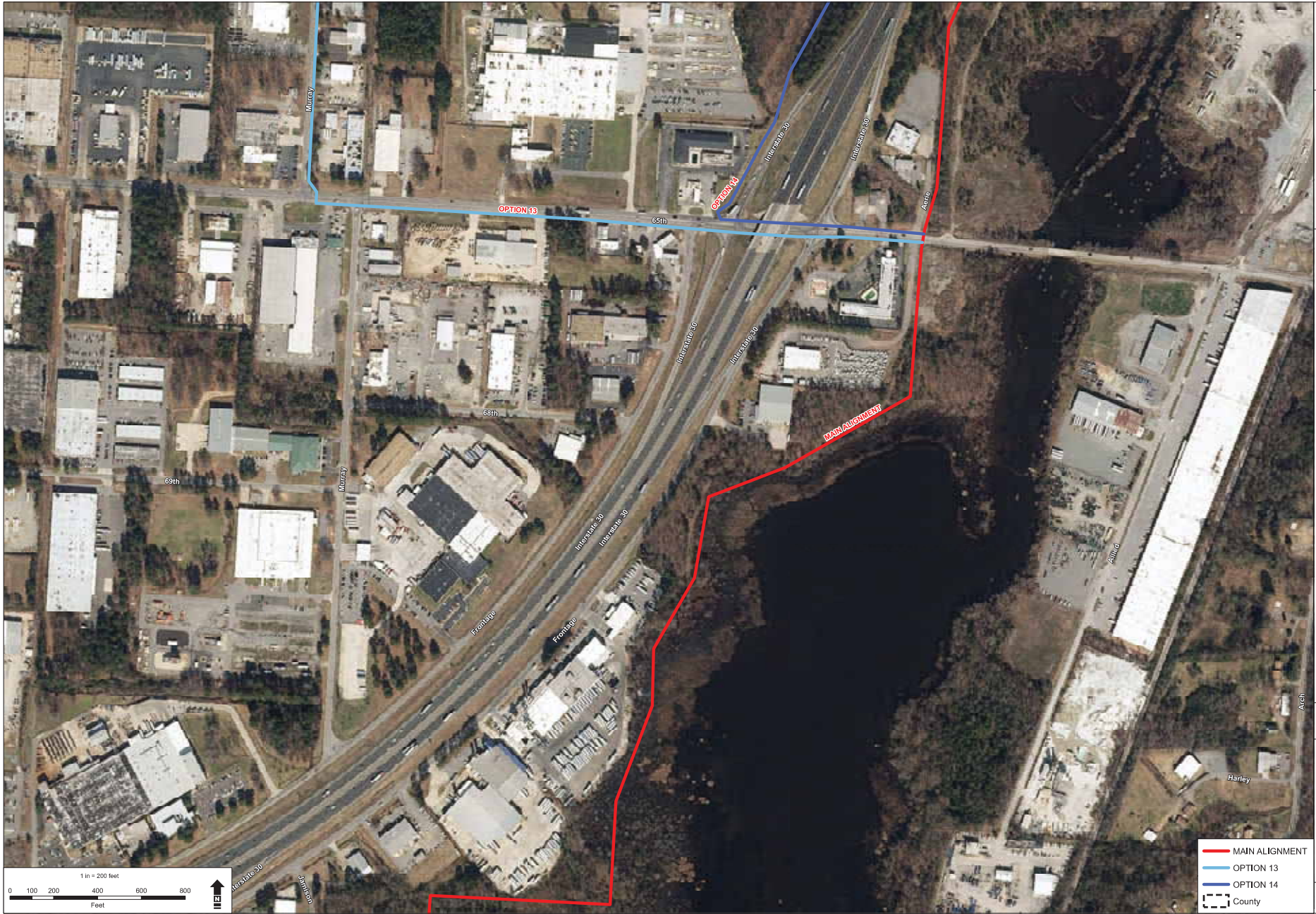


PULASKI, GARLAND, AND SALINE COUNTIES
 PULASKI COUNTY, ARKANSAS
 SOUTHWEST TRAIL SYSTEM

JOB NO.: 061562
 DATE: NOVEMBER 2018

PRELIMINARY
 ALIGNMENTS

MAIN ALIGNMENT
 County



4701 Northshore Drive
 North Little Rock, AR 72118
 (501) 376-3633



PULASKI, GARLAND, AND SALINE COUNTIES
 PULASKI COUNTY, ARKANSAS
 SOUTHWEST TRAIL SYSTEM

JOB NO. 061562
 DATE: NOVEMBER 2018

PRELIMINARY
 ALIGNMENTS



GARVER CONSULTANTS, INC. 4701 Northshore Drive, North Little Rock, AR 72118
 PROJECT: PULASKI, GARLAND, AND SALINE COUNTIES, ARKANSAS SOUTHWEST TRAIL SYSTEM
 DATE: NOVEMBER 2018
 SHEET: 13 OF 14



4701 Northshore Drive
 North Little Rock, AR 72118
 (501) 376-3633



PULASKI, GARLAND, AND SALINE COUNTIES
 PULASKI COUNTY, ARKANSAS
 SOUTHWEST TRAIL SYSTEM

JOB NO.: 061562
 DATE: NOVEMBER 2018

PRELIMINARY
 ALIGNMENTS



4701 Northshore Drive
 North Little Rock, AR 72118
 (501) 376-3633



PULASKI, GARLAND, AND SALINE COUNTIES
 PULASKI COUNTY, ARKANSAS
 SOUTHWEST TRAIL SYSTEM

JOB NO.: 061562
 DATE: NOVEMBER 2018

PRELIMINARY
 ALIGNMENTS

Page 54 of 72



4701 Northshore Drive
 North Little Rock, AR 72118
 (501) 376-3633



PULASKI, GARLAND, AND SALINE COUNTIES
 PULASKI COUNTY, ARKANSAS
 SOUTHWEST TRAIL SYSTEM

JOB NO.: 061562
 DATE: NOVEMBER 2018

PRELIMINARY
 ALIGNMENTS



4701 Northshore Drive
North Little Rock, AR 72118
(501) 376-3633

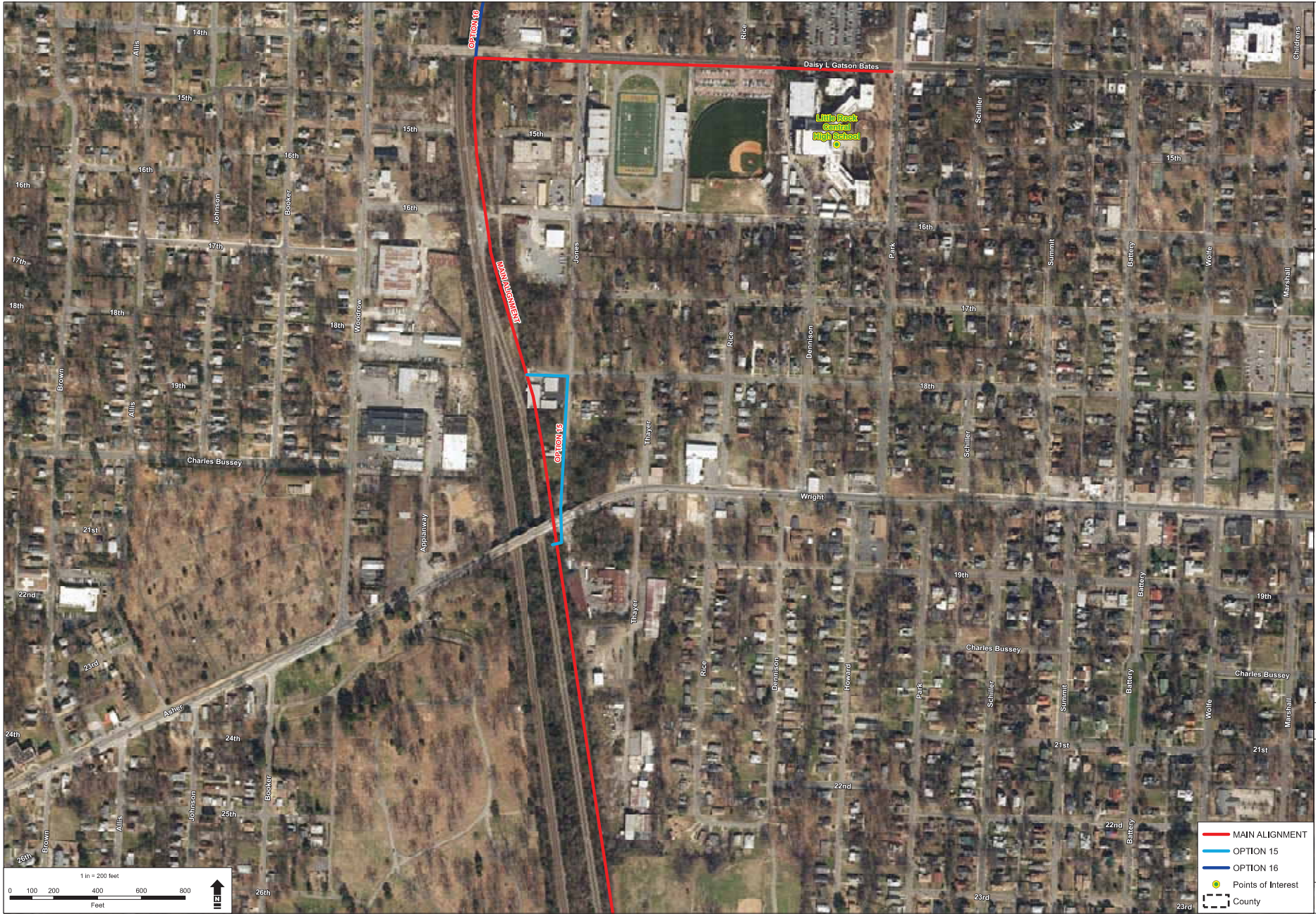


PULASKI, GARLAND, AND SALINE COUNTIES
PULASKI COUNTY, ARKANSAS
SOUTHWEST TRAIL SYSTEM

JOB NO.: 061562
DATE: NOVEMBER 2018

PRELIMINARY
ALIGNMENTS

Page 56 of 72



4701 Northshore Drive
 North Little Rock, AR 72118
 (501) 376-3633



**PULASKI, GARLAND, AND SALINE COUNTIES
 PULASKI COUNTY, ARKANSAS
 SOUTHWEST TRAIL SYSTEM**

JOB NO. 061562
 DATE: NOVEMBER 2018

**PRELIMINARY
 ALIGNMENTS**

- MAIN ALIGNMENT
- OPTION 15
- OPTION 16
- Points of Interest
- County



4701 Northshore Drive
 North Little Rock, AR 72118
 (501) 376-3633



**PULASKI, GARLAND, AND SALINE COUNTIES
 PULASKI COUNTY, ARKANSAS
 SOUTHWEST TRAIL SYSTEM**

JOB NO. 061562
 DATE: NOVEMBER 2018

**PRELIMINARY
 ALIGNMENTS**



4701 Northshore Drive
 North Little Rock, AR 72118
 (501) 376-3633

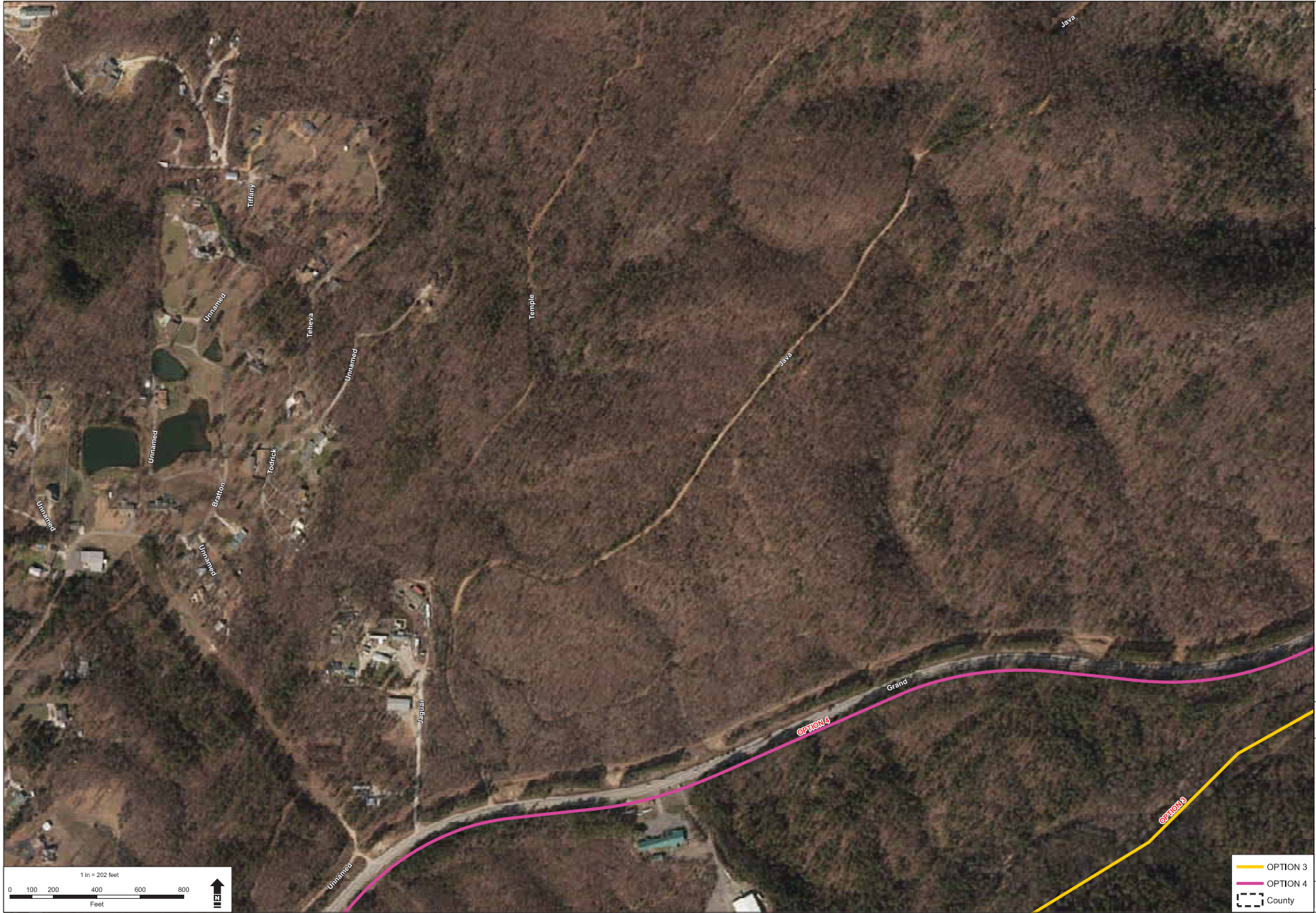


PULASKI, GARLAND, AND SALINE COUNTIES
 PULASKI COUNTY, ARKANSAS
 SOUTHWEST TRAIL SYSTEM

JOB NO. 061562
 DATE: NOVEMBER 2018

PRELIMINARY
 ALIGNMENTS

- OPTION 16
- OPTION 17
- Points of Interest
- County



- OPTION 3
- OPTION 4
- County



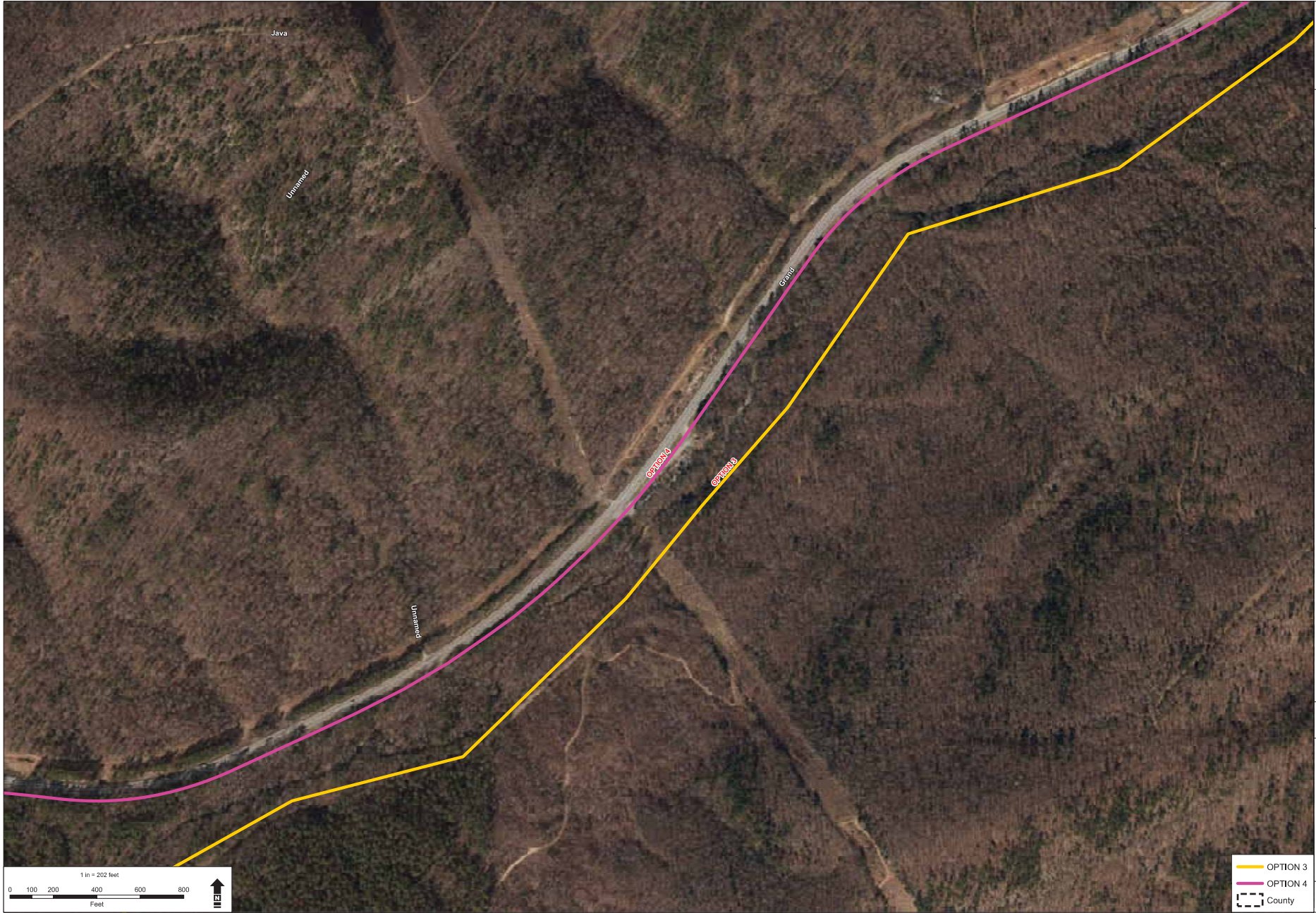
4701 Northshore Drive
 North Little Rock, AR 72118
 (501) 376-3633



PULASKI, GARLAND, AND SALINE COUNTIES
 GARLAND COUNTY, ARKANSAS
 SOUTHWEST TRAIL SYSTEM

JOB NO.: 061562
 DATE: NOVEMBER 2018

PRELIMINARY
 ALIGNMENTS



4701 Northshore Drive
 North Little Rock, AR 72118
 (501) 376-3633



PULASKI, GARLAND, AND SALINE COUNTIES
 GARLAND COUNTY, ARKANSAS
 SOUTHWEST TRAIL SYSTEM

JOB NO.: 061562
 DATE: NOVEMBER 2018

PRELIMINARY
 ALIGNMENTS

- OPTION 3
- OPTION 4
- County



4701 Northshore Drive
 North Little Rock, AR 72118
 (501) 376-3633



PULASKI, GARLAND, AND SALINE COUNTIES
 GARLAND COUNTY, ARKANSAS
 SOUTHWEST TRAIL SYSTEM

JOB NO.: 061562
 DATE: NOVEMBER 2018

PRELIMINARY
 ALIGNMENTS



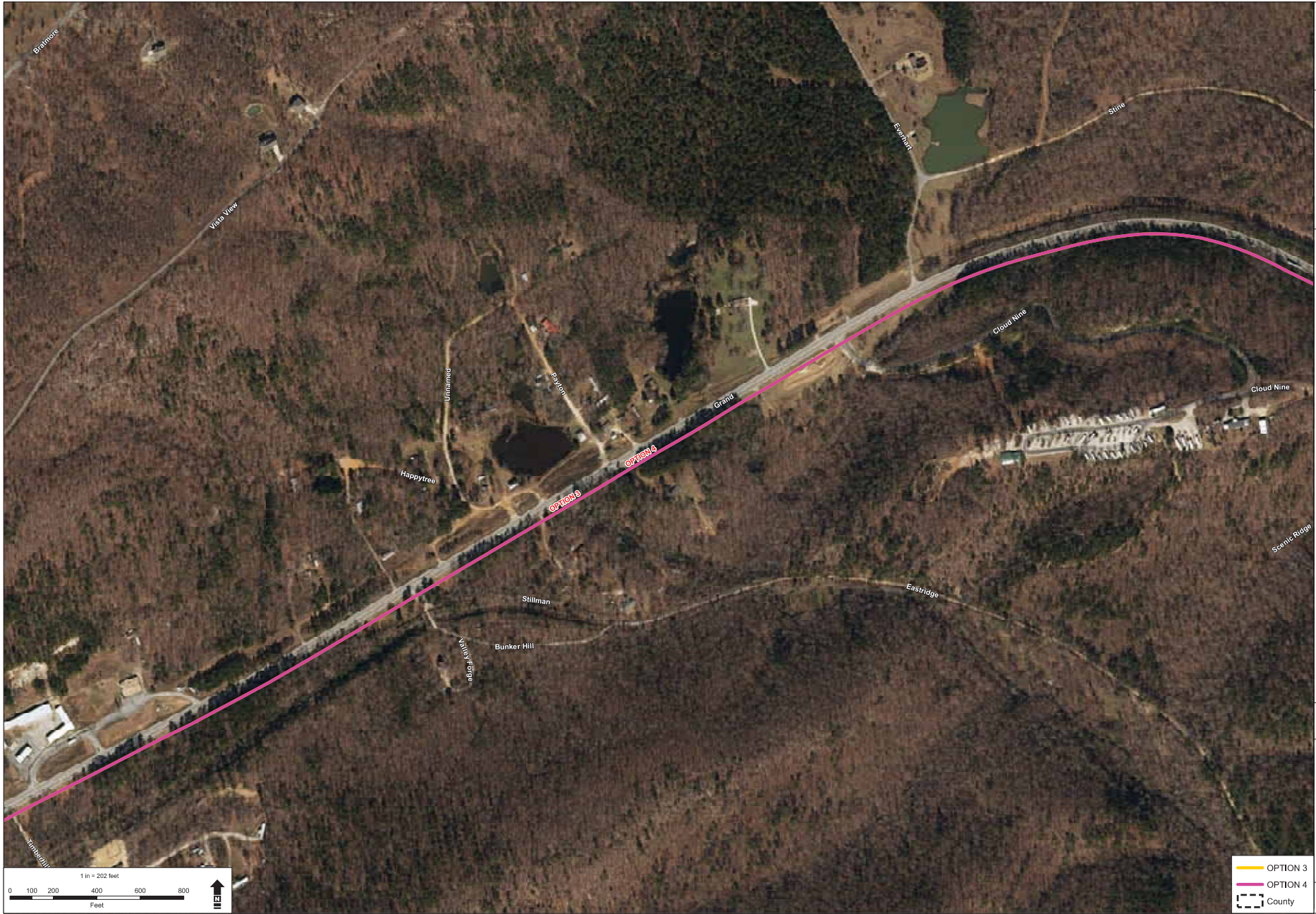
4701 Northshore Drive
 North Little Rock, AR 72118
 (501) 376-3633



PULASKI, GARLAND, AND SALINE COUNTIES
 GARLAND COUNTY, ARKANSAS
 SOUTHWEST TRAIL SYSTEM

JOB NO.: 061562
 DATE: NOVEMBER 2018

PRELIMINARY
 ALIGNMENTS



4701 Northshore Drive
 North Little Rock, AR 72118
 (501) 376-3633



PULASKI, GARLAND, AND SALINE COUNTIES
 GARLAND COUNTY, ARKANSAS
 SOUTHWEST TRAIL SYSTEM

JOB NO.: 061562
 DATE: NOVEMBER 2018

PRELIMINARY
 ALIGNMENTS

- OPTION 3
- OPTION 4
- County



4701 Northshore Drive
 North Little Rock, AR 72118
 (501) 376-3633



PULASKI, GARLAND, AND SALINE COUNTIES
 GARLAND COUNTY, ARKANSAS
 SOUTHWEST TRAIL SYSTEM

JOB NO.: 061562
 DATE: NOVEMBER 2018

PRELIMINARY
 ALIGNMENTS



GARVER CONSULTANTS, INC. 4701 Northshore Drive, North Little Rock, AR 72118
 (501) 376-3633
 www.garver.com



4701 Northshore Drive
North Little Rock, AR 72118
(501) 376-3633



PULASKI, GARLAND, AND SALINE COUNTIES
GARLAND COUNTY, ARKANSAS
SOUTHWEST TRAIL SYSTEM

JOB NO.: 061562
DATE: NOVEMBER 2018

PRELIMINARY
ALIGNMENTS



4701 Northshore Drive
 North Little Rock, AR 72118
 (501) 376-3633



PULASKI, GARLAND, AND SALINE COUNTIES
 GARLAND COUNTY, ARKANSAS
 SOUTHWEST TRAIL SYSTEM

JOB NO.: 061562
 DATE: NOVEMBER 2018

PRELIMINARY
 ALIGNMENTS



4701 Northshore Drive
 North Little Rock, AR 72118
 (501) 376-3633

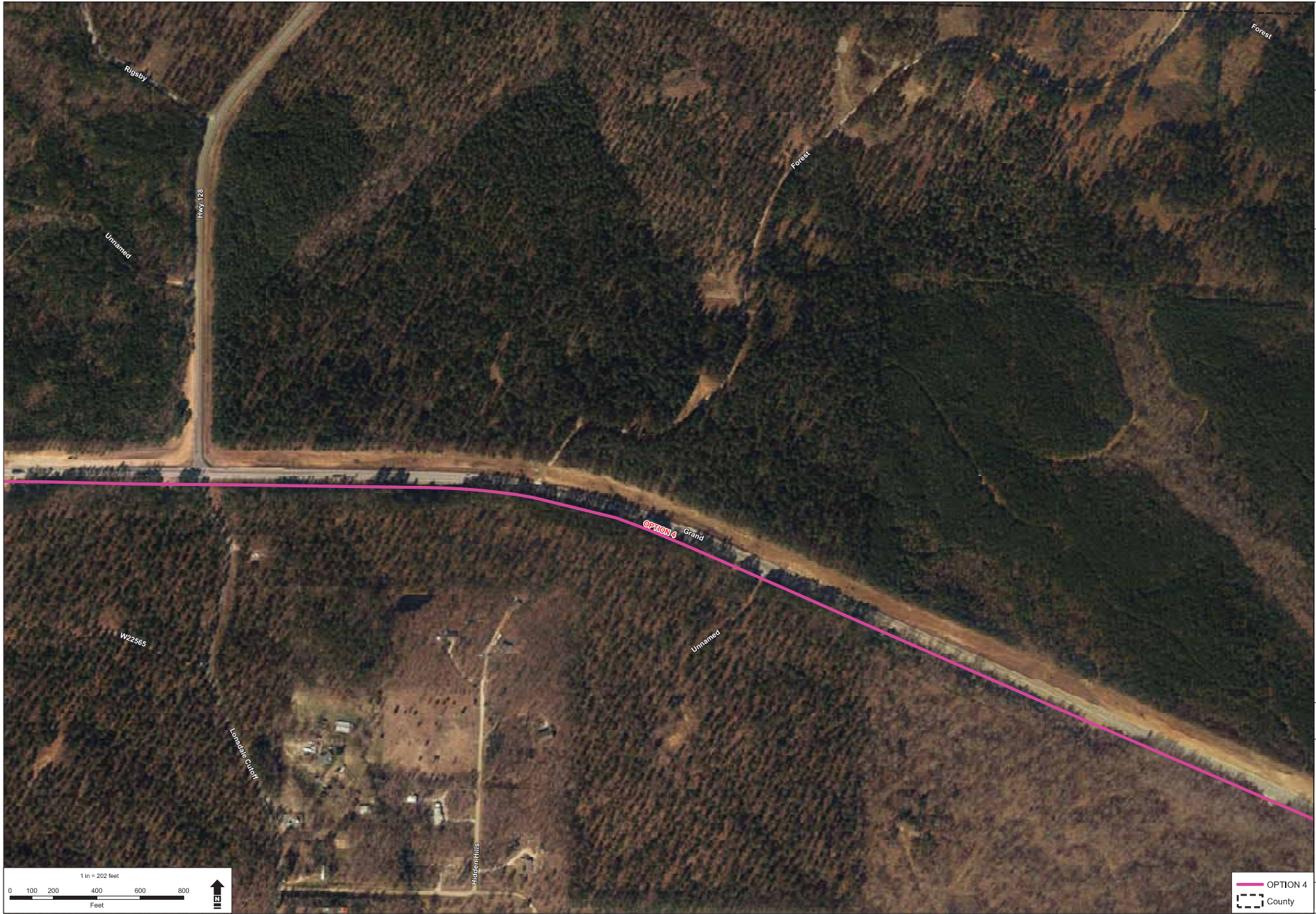


PULASKI, GARLAND, AND SALINE COUNTIES
 GARLAND COUNTY, ARKANSAS
 SOUTHWEST TRAIL SYSTEM

JOB NO.: 061562
 DATE: NOVEMBER 2018

PRELIMINARY
 ALIGNMENTS

OPTION 4
 County



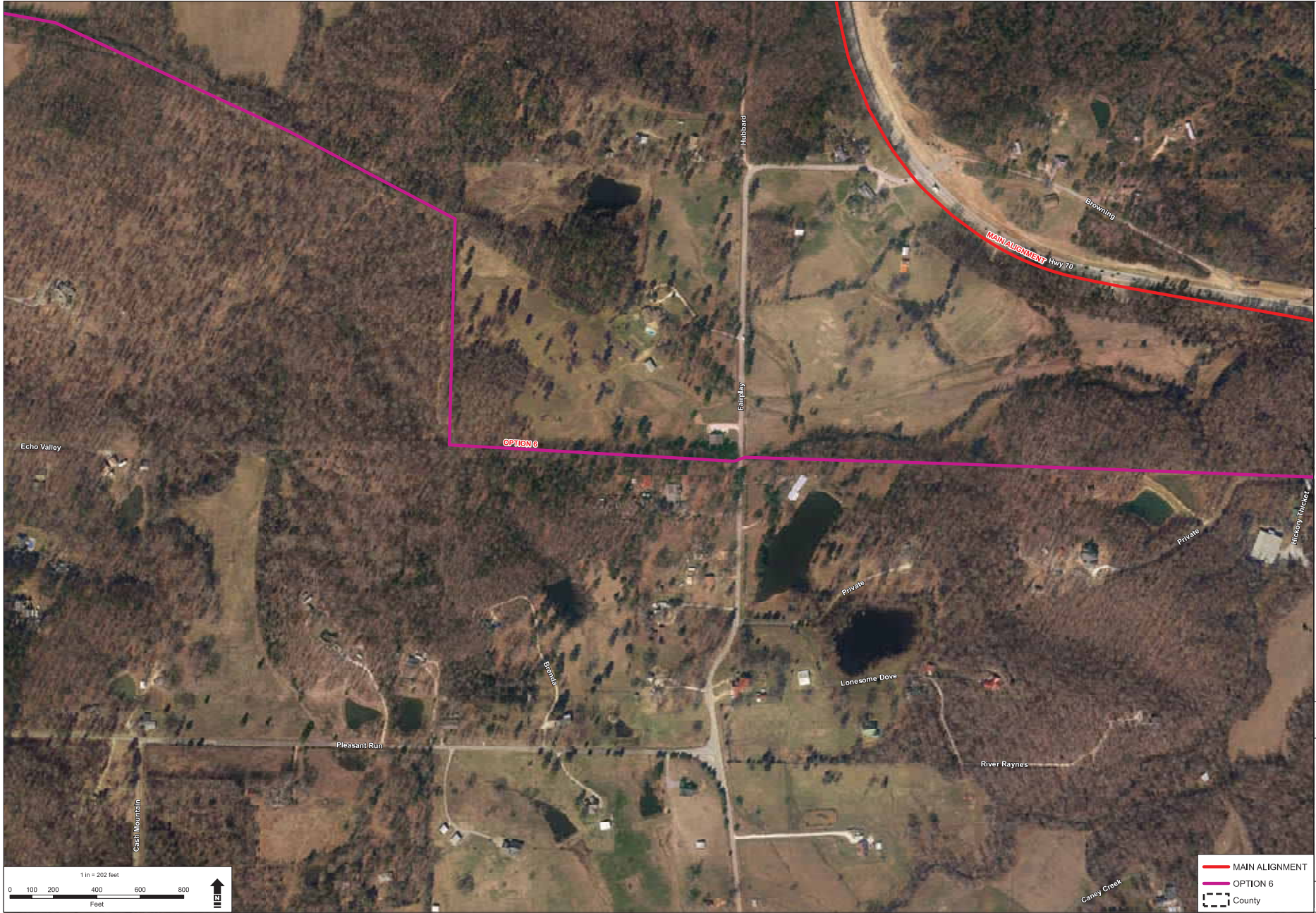
4701 Northshore Drive
 North Little Rock, AR 72118
 (501) 376-3633



PULASKI, GARLAND, AND SALINE COUNTIES
 GARLAND COUNTY, ARKANSAS
 SOUTHWEST TRAIL SYSTEM

JOB NO.: 061562
 DATE: NOVEMBER 2018

PRELIMINARY
 ALIGNMENTS



4701 Northshore Drive
 North Little Rock, AR 72118
 (501) 376-3633

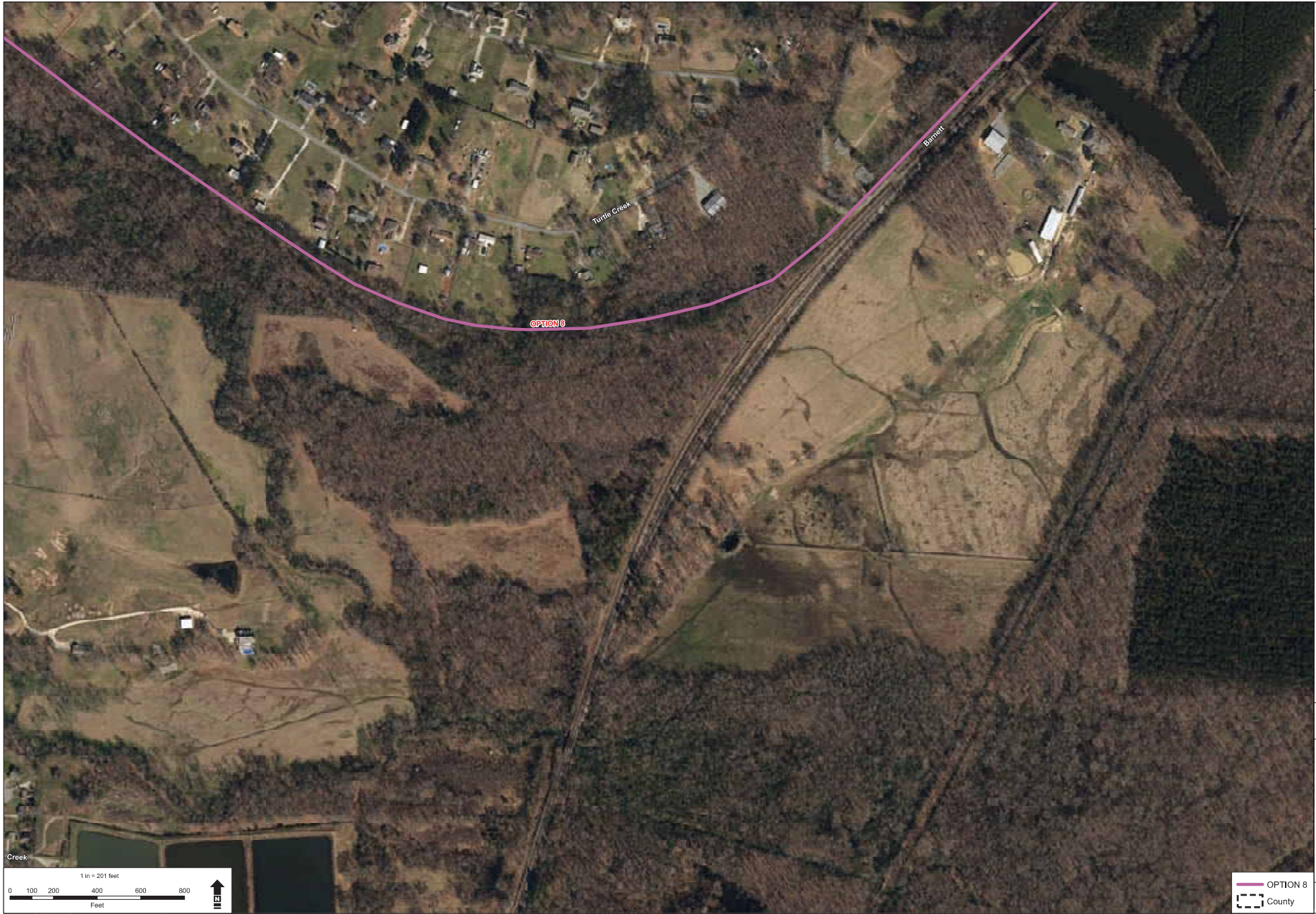


PULASKI, GARLAND, AND SALINE COUNTIES
 SALINE COUNTY, ARKANSAS
 SOUTHWEST TRAIL SYSTEM

JOB NO.: 061562
 DATE: NOVEMBER 2018

PRELIMINARY
 ALIGNMENTS

- MAIN ALIGNMENT
- OPTION 6
- County



4701 Northshore Drive
 North Little Rock, AR 72118
 (501) 376-3633

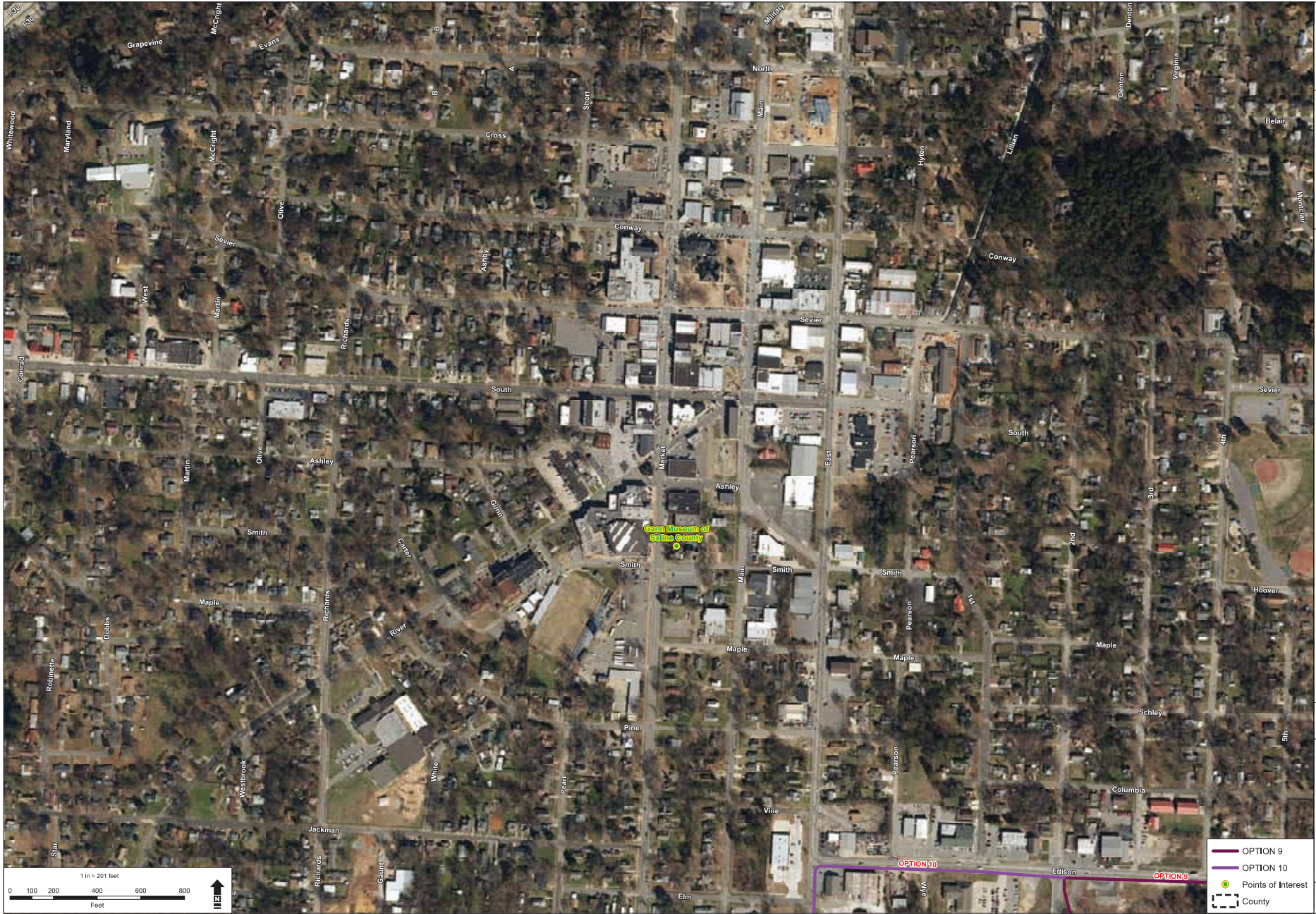


PULASKI, GARLAND, AND SALINE COUNTIES
 SALINE COUNTY, ARKANSAS
 SOUTHWEST TRAIL SYSTEM

JOB NO.: 061562
 DATE: NOVEMBER 2018

PRELIMINARY
 ALIGNMENTS

GARVER HAS PREPARED THIS PLAN FOR THE CLIENT'S USE ONLY. IT IS NOT TO BE USED FOR ANY OTHER PURPOSES WITHOUT THE WRITTEN CONSENT OF GARVER.



4701 Northshore Drive
 North Little Rock, AR 72118
 (501) 376-3633



PULASKI, GARLAND, AND SALINE COUNTIES
 SALINE COUNTY, ARKANSAS
 SOUTHWEST TRAIL SYSTEM

JOB NO. 061562
 DATE: NOVEMBER 2018

PRELIMINARY
 ALIGNMENTS

OPTION 9
 OPTION 10
 Points of Interest
 County